

**COMPANY  
PROFILE**



**KRITI ENGINEERING & CONSTRUCTION**



HANS ENCLAVE, 603/18,  
NEAR RAJIV CHOWK,  
Gurugram, Haryana



Tel : +91 -9319710061,  
+91 -9319710062



E-mail: [info@kritiengineering.in](mailto:info@kritiengineering.in)



[www.kritiengineering.in](http://www.kritiengineering.in)



**Motivation** is the catalyzing ingredient for every successful innovation.

The amount of technology in buildings and homes is rapidly growing and changing. The most significant change is that everything is now on the network: audio, video, voice,

# TABLE OF CONTENTS

#	TITLE	PAGE
I.	About us	01
II.	All Type of Civil Work	02
III.	Interior	03
IV.	Structural Work	04
V.	All Type of Aluminum, Metals & PVC Doors	05
VI.	Steel Work	06
VII.	Roof & Wall Cladding	07
VIII.	Bollard/Column Protector & Ladder	08
IX.	Earth Pit & Drain Cover,Solid Wall Panel	09
X.	Automatic shutter and door for factory	10
XI.	Our Projects	11-16
XII.	Our Teams	17
XIII.	Our Clients	17
XIV.	Company History	18
XV.	Contact us	19

# COMPANY OVERVIEW

## ABOUT US

*We KRITI Engineering & Construction* working as a one-stop solution for all construction and Interior related services to all sizes of organisations ranging from institutional, industrial, commercial and individual clients nationwide. We are constantly growing and evolving team of experts, with staff strength of over 50 skilled professionals and around 500 manpower.

## OUR QUALITY POLICY

KRITI Engineering & Construction is dedicated to provide the most appropriate solution to clients through assessment of their need and demands and also to maintain good relation with employee, sub contractor, suppliers and Project Partner based on trust and commitment.

THE QUALITY OF SERVICE  
WE PROVIDE IS CRUCIAL  
TO EVERY PROJECT.



If your ship  
doesn't come in,  
**swim out to  
meet it!**

# SERVICES WE PROVIDE



## ALL TYPE OF CIVIL WORK

Being a pioneer in the construction domain, we process all types of Civil Works required for construction. We work on everything from foundation to complete installation of pipe lines and tap works. Our workforce is highly experienced in piping, plumbing, roof designing and fitting of other internal accessories in homes and commercial complexes.

*We are reckoned for completing constructions using superior raw material.*

WE DELIVER  
TRUST  
AND  
QUALITY



# INTERIOR



Interior Design were put together instinctively as a part of the process of building. The profession of interior design has been a consequence of the development of society and the complex architecture that has resulted from the development of industrial processes. In Interior & Exterior Designs pursuit of effective use of space, user well-being and functional design has contributed to the development of the contemporary interior design profession. Interior design is "the art or process of designing the interior, often including the exterior, of a room or building". An interior designer is someone who coordinates and manages such projects. Interior & Exterior designs is a multifaceted profession that includes conceptual development, communicating with the stakeholders of a project and the management and execution of the design.



**CREATE TRUST**  
*We keep our promises and deliver what is pledged. And by doing so, we earned the unfaltering trust of our clients, partners and associates.*

# STRUCTURAL WORK



We are one of the renowned names engaged in offering right solutions to our clients in the field of Industrial Structure Erection Service. The offered service is rendered by our skilled professionals & technicians, who possess immense experience in the domain. With a commitment to maintain the highest safety standards, our highly skilled staff and welders produce top-quality structural fabrication and design work.

*We are reckoned for completing constructions using superior raw material.*



## BUILD QUALITY

*Quality being the most important attribute of any real estate project remains our top priority as well. Hence unparalleled quality forms the very foundation of all our systems, services and projects.*

# ALL TYPE OF ALUMINUM, METALS & PVC DOORS



We hold expertise in designing, manufacturing and installing the aluminum doors, which are widely preferred by residential and commercial clients to reflect their lifestyle. We pay painstaking attention on the quality of aluminum and procure it from the reliable suppliers, who hold a good reputation in the market. Further, we are supported by a team of qualified and experienced designers and craftsmen, who are dexterous



**WE DELIVER  
TRUST  
AND  
QUALITY**

# STEEL WORK



Stainless Steel Railings such as Stainless Steel Modern Railing, Stainless Steel Hand Railings and Stainless Steel Capsile Railings which have dimensional accuracy and excellent attributes. Combined using the best known features, these stainless steel railings are constructed making use of the high grade steel which is procured from our most trusted vendors



DELIVER  
ON  
YOUR  
PROMISE



# ROOF & WALL CLADDING



Kirti engineering offers a variety of Puff panel , PPGI Sheet & Polycarbonate Sheet profiles that is used in all the cladding, Roofing applications, this strong and attractive wall and roof panels are made from bare AluZinc coated steel . These Roofing Sheets & Panel have excellent corrosion and weather resistance longer spanning capability, Thermal Efficiency, Long Durability & Safety craftsmen, who are dexterous



## CREATE TRUST

*We keep our promises and deliver what is pledged.*

*And by doing so, we earned the unfaltering trust of our clients, partners and associates.*

# BOLLARD/COLUMN PROTECTOR & LADDER



Wall Protector is great way to protect your walls. Our wall protectors help prevent damage to walls in areas with forklift, hand truck or drum traffic. These guards are made of Metal Steel & Stainless steel, Each impact resistant panel can be mounted end to end, and features unique construction.



## BUILD QUALITY

*Quality being the most important attribute of any real estate project remains our top priority as well. Hence unparalleled quality forms the very foundation of all our systems, services and projects.*

# EARTH PIT & DRAIN COVER



We are major manufacturer and supplier of a range of Heavy Duty Earth Pit , Drain cover in Delhi NCR & North India. We offered Heavy Duty Earth Pit Covers & Drain cover is widely for their super ruggedness and long lasting serving life. Available at most affordable market pri

## SOLID WALL PANEL



**WE DELIVER  
TRUST  
AND  
QUALITY**

# AUTOMATIC SHUTTER AND DOOR FOR FACTORY



Standard type, mostly used, in all different industries. With aluminum bar to improve its wind resistance, fit for both outside and inside use.



DELIVER  
ON  
YOUR  
PROMISE



# DOOSAN PROJECT



**Work station modification and refixing**

# MAHLE PROJECT



**Central Purchase & HR Office Renovation Work**

# MAHLE PROJECT



**Central Purchase & HR Office Renovation Work**

# RPSC PROJECT



**Roof Repair & Water proofing**

# RPSC PROJECT



**Roof Repair & Water proofing**

# TEMPORARY SITE OFFICE



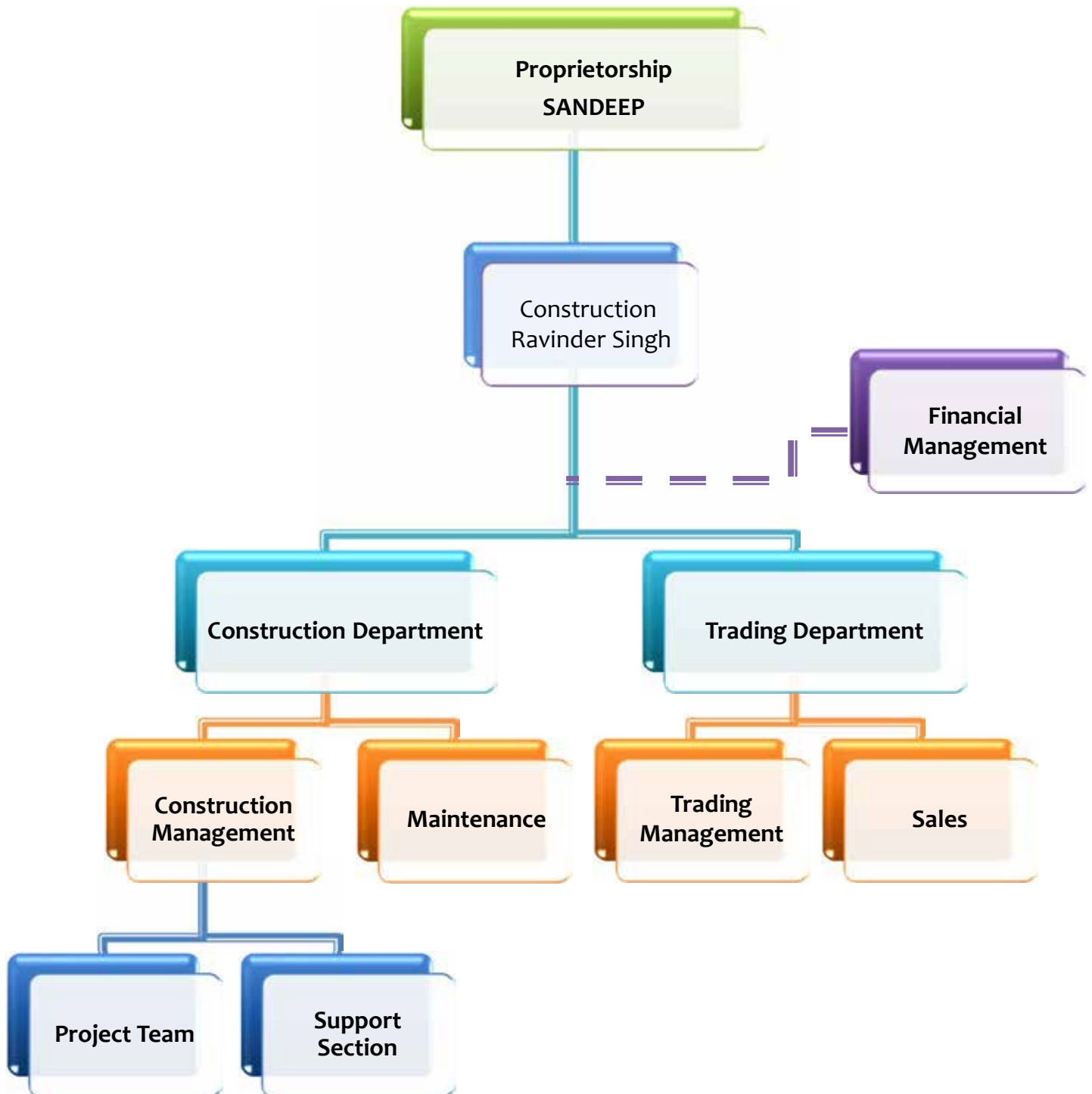
**Tremix flooring , Plumbing Work**

# TEMPORARY SITE OFFICE



**MS Structure Work , Wall & Roof Panel , Electrical Etc.**

# MEET OUR CREATIVE TEAM



# THINK GLOBAL... ACT LOCAL

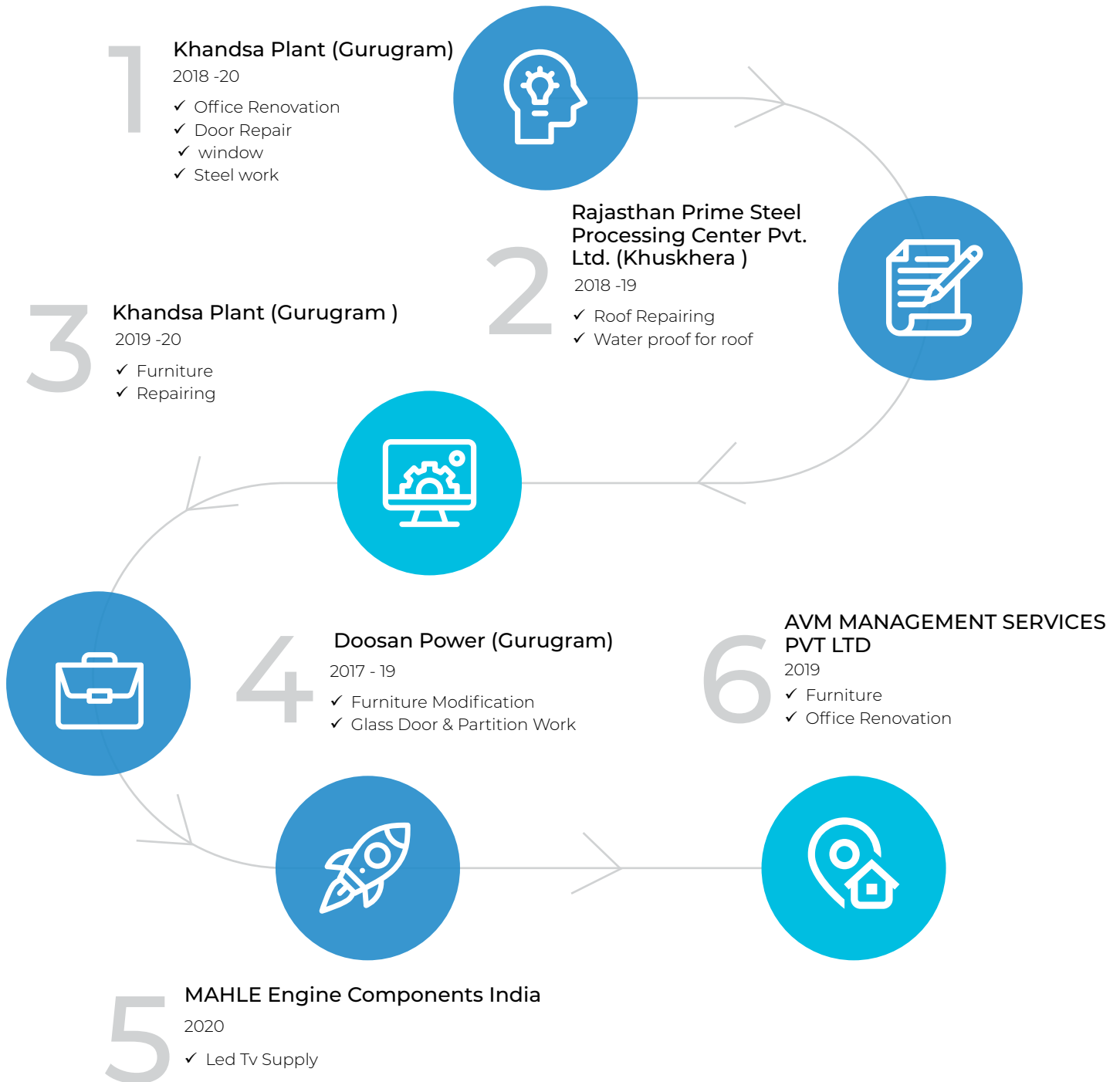
Clients are the most important entities in any domain. Thus, KRITI Engineering & Construction believes in delivering products that cater to specific customer requirements. This has helped us to develop and retain a business relationship with the following clients in India



# 3D MODELING AND DESIGN SERVICES



# COMPANY HISTORY





# KRITI

INTERIOR | ENGINEERING | PROJECTS



HANS ENCLAVE,  
603/18, NEAR RAJIV  
CHOWK, Gurugram,  
Haryana, 122001



Tel : +91 9319710061  
+91-9319710062



E-mail: [info@kritiengineering.in](mailto:info@kritiengineering.in)



[www.kritiengineering.in](http://www.kritiengineering.in)

